

PRO D 1100 AtEx 2-22 AtEx 1-21

EXTREMELY STURDY TELESCOPIC CONTAINER LIFTING SYSTEM

REINFORCED FRAME

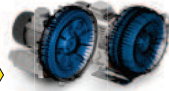
STORAGE CONTAINER

TANGENTIAL INLET FOR BETTER DUST SEPARATION FROM THE FILTER

CONTAINER, FILTER CHAMBER AND TOP COVER MADE IN AISI 304 STAINLESS STEEL IN ACCORDANCE TO ATEX STANDARD



SINGLE-STAGE OR TWO-STAGE ATEX SIDE CHANNEL TURBINE AtEx

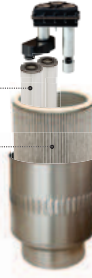


SEMI-AUTOMATIC FILTER CLEANING SYSTEM WITH A PNEU-MECHANICAL PISTON



SECONDARY HEPA FILTER (OPTIONAL)

M CLASS CONDUCTIVE ALUMINIZED PRIMARY CARTRIDGE FILTER



CYCLONE FOR INCREASED FILTER EFFICIENCY

PRO CAR 1155 S AtEx 2-22

TWO-STAGE ATEX SIDE CHANNEL TURBINE AtEx

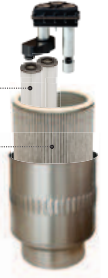


SEMI-AUTOMATIC FILTER CLEANING SYSTEM WITH A PNEU-MECHANICAL PISTON



SECONDARY HEPA FILTER (OPTIONAL)

M CLASS CONDUCTIVE ALUMINIZED PRIMARY CARTRIDGE FILTER



CYCLONE FOR INCREASED FILTER EFFICIENCY

EXTREMELY STURDY TELESCOPIC CONTAINER LIFTING SYSTEM

STORAGE CONTAINER

TANGENTIAL INLET FOR BETTER DUST SEPARATION FROM THE FILTER

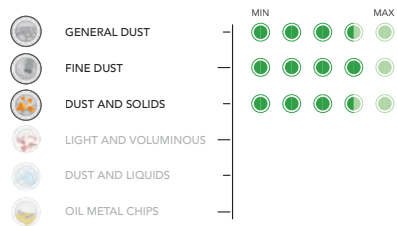
CONTAINER, FILTER CHAMBER AND TOP COVER MADE IN AISI 304 STAINLESS STEEL IN ACCORDANCE TO ATEX STANDARD



The models of the D1100 ATEX series are heavy-duty industrial vacuum cleaners suitable for cleaning dust or solid ideal in the industry as characterized by a building designed to meet the needs of solidity and strength. The lifting system is designed to vacuum and filling the containers with heavy material in order to ensure a good reliability in time.

Powered industrial ATEX vacuum cleaner with three-phase side channel of 5.5 kW turbine in series, high depression ideal for the suction of heavy materials, high specific weight, or long distances as it is able to reach a maximum vacuum of 500 mBar. They are characterized by a construction designed to meet the requirements of sturdiness and solidity. The lifting system is designed to vacuum and filling the containers with heavy material in order to ensure a good reliability in time.

WORK EFFICIENCY



TYPE OF APPLICATION

DUST

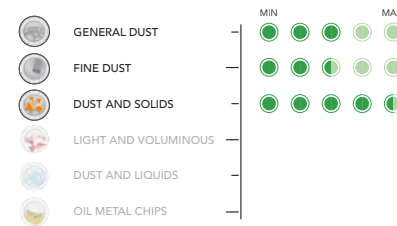
TECHNICAL DATAS

PRO	D 1122 <small>AtEx 2-22</small>	D 1130 <small>AtEx 2-22</small>	D 1155 <small>AtEx 2-22</small>	D 1140 <small>AtEx 21</small>
MOTORIZATION	TURBINE	TURBINE	TURBINE	TURBINE
POWER	2 kW	2,6 kW	5,2 kW	3,4 kW
VOLTAGE	230 V <small>AtEx</small>	400 V <small>AtEx</small>	400 V <small>AtEx</small>	400 V <small>AtEx</small>
FREQUENCY	50 Hz	50-60 Hz	50 Hz	50-60 Hz
FILTER SHAKER	SEMI - AUTO	SEMI - AUTO	SEMI - AUTO	SEMI - AUTO
FILTER CLASS	22000 cm ²	22000 cm ²	22000 cm ²	22000 cm ²
STANDARD FILTRATION	M	M	M	M
FILTRATION OPTIONAL	M + HEPA	M + HEPA	M + HEPA	M + HEPA
AIR FLOW	320 m ³ /h	320 m ³ /h	520 m ³ /h	320 m ³ /h
MAX DEPRESSION	300 mBar	320 mBar	320 mBar	320 mBar
VACUUM VALVE	200 mBar	220 mBar	240 mBar	220 mBar
CAPACITY	75 L	75 L	75 L	75 L
DIMENSIONS	80x63 h 165	80x63 h 165	80x63 h 180	80x63 h 165
WEIGHT	126 Kg	126 Kg	151 Kg	126 Kg

DEGREE OF SPECIFICITY



WORK EFFICIENCY



TYPE OF APPLICATION

DUST - SOLIDS

DEGREE OF SPECIFICITY



TECHNICAL DATAS

PRO	CAR 1155 S <small>AtEx 2-22</small>
MOTORIZATION	TURBINE
POWER	5,2 kW
VOLTAGE	400 V <small>AtEx</small>
FREQUENCY	50 Hz
FILTER SHAKER	SEMI - AUTO
FILTER CLASS	22000 cm ²
STANDARD FILTRATION	M
FILTRATION OPTIONAL	M + HEPA
AIR FLOW	320 m ³ /h
MAX DEPRESSION	530 mBar
VACUUM VALVE	400 mBar
CAPACITY	100 L
DIMENSIONS	118x63 h 169
WEIGHT	205 Kg

DEGREE OF SPECIFICITY

